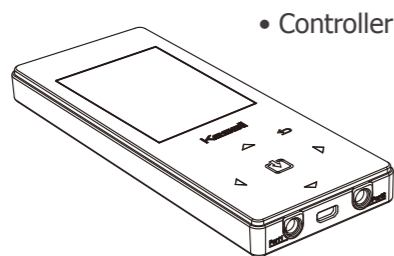


Kessil® Spectral Controller



Quick Start Guide

INSIDE THE BOX

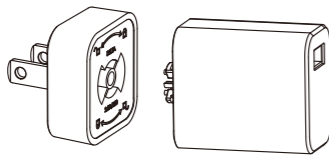


• Controller

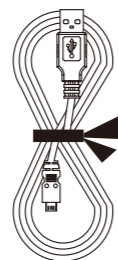


• Magnetic
Back Plate

• Power Adaptor



• Micro USB
Cable



• Unit Link Cable

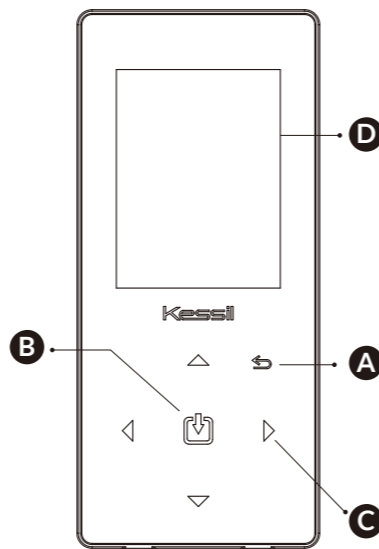


• Screws (X2)

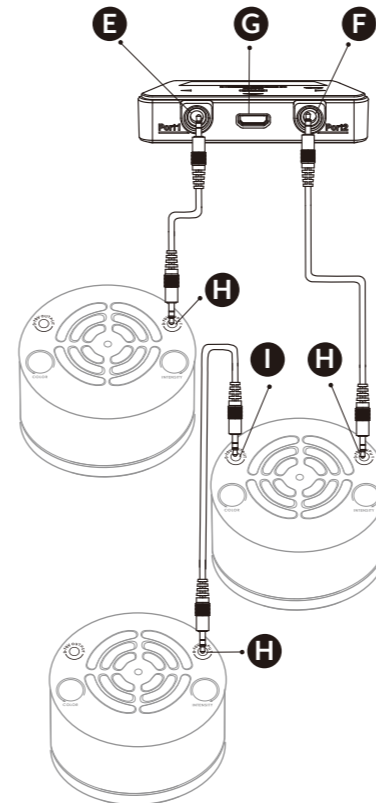


• Nylon anchor (X2)

NAVIGATION



- A Return
- B Enter
- C Direction Pad
- D Display Screen



TROUBLESHOOTING

No Power

- Double check that all ports and cables are properly connected.
- Plug the controller into to an alternative wall outlet.

No Light Response

- Double check unit link cable connection.
- Double check units are plugged into correct port.

Power Supply Specifications

| DC in | |
|---------------------|---------------------|
| Power consumption | 1W maximum |
| Input Voltage | 5VDC +5% |
| Listed power supply | |
| Input | 90-264 VAC 47-63 Hz |
| Output | 5VDC,2000mA maximum |

For further assistance, contact Kessil customer service at (510) 620-5250.

SAFETY INSTRUCTIONS

- 1 **DO NOT** use a power supply outside the specifications. This is a fire hazard and may lead to unit failure.
- 2 **DO NOT** use outdoors. This unit is intended for indoor use only.
- 3 **DO NOT** expose unit to an extremely humid environment or submerge unit in water. This may lead to unit failure.
- 4 **DO NOT** cover or place objects on the power supply. The power supply should not be contained in an airtight space.
- 5 **DO NOT** mount over open water.
- 6 **ENSURE** that the back plate is correctly mounted to a steady surface. Incorrect mounting can result in detachment of the plate and controller.

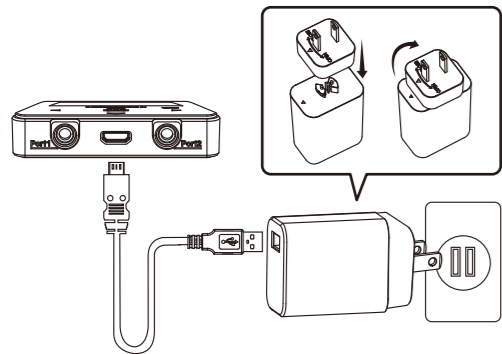


Kessil Lighting

A DiCon Brand
1689 Regatta Blvd,
Richmond, CA 94804
(510) 620-5250

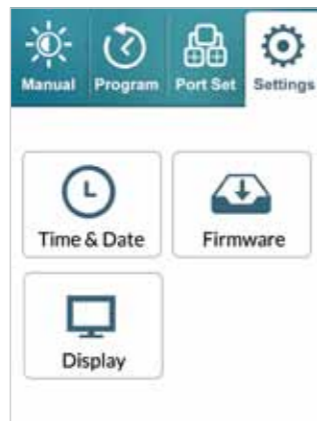
Step 1 Connect

- Insert the microUSB head of the cable into the microUSB slot (G).
- Insert the USB head of the cable into the power adaptor.
- Assemble the power adaptor by screwing the plug head into the adaptor body.
- Plug the adaptor into a wall outlet to power the controller.
- Connect the lights to the controller using the unit link cable.



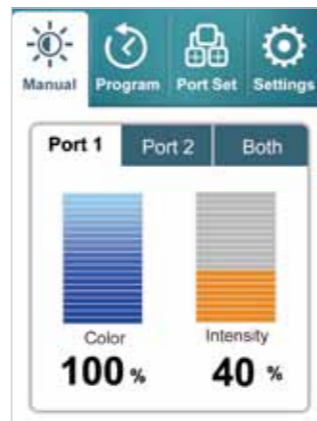
Step 2 Set Up

- Use the direction pad (C) to navigate to the **Settings** tab.
- Press to access the settings.
- Set the **Time & Date**.
- Press to return to the main menu.



Step 3 Manual Configuration

- Navigate to the **Manual** tab.
- Press to enter manual mode.
- Adjust the color and intensity on the two bars. This can be done individually for each port or both at the same time.
- Press to return to the main menu.



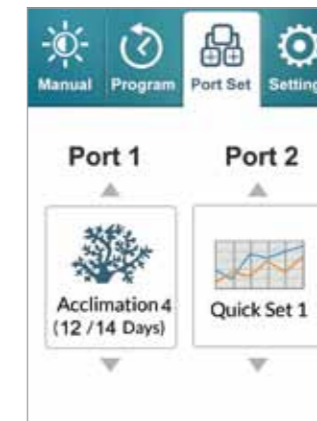
Step 4 Program

- Navigate to the **Program** tab.
- Press to enter program mode.
- Select **Quick Set** to create a custom light schedule.
 - Adjust intensity and color at each time point.
 - Review your cycle with preview mode.
 - Make sure to save when finished.
- Select **Acclimation** to set an acclimation schedule.
 - Set the length of acclimation and starting intensity.
 - Specify the color and intensity schedule you want the acclimation to follow.
 - Save when finished.
- Press to return to the main menu.



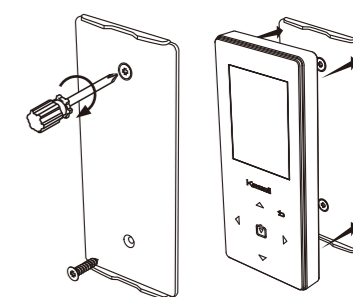
Step 5 Port Settings

- Navigate to **Port Set** tab.
- Press to enter port settings.
- Set the desired schedule for each port.



Step 6 Mounting

- Use the screws provided to mount the magnetic back plate to a wooden surface.
- If mounting to a wall, pre-drill two 1/4" (6.5mm) holes and insert nylon anchors before screwing the plate in.



You're Finished !